

NEW! All-in-One HD Video Solution

Change the way you view and capture HD video forever

HD-210U High Definition Video Camera

- Real time HD / Single chip CMOS camera
- True High Definition (1920 X 1080)
- Perfect Color Reproduction
- Programmed for simple one-push operation
- Highest frame rate for real-time live viewing (60 fps)
- Full Screen Video (16:9) with smooth motion
- Simultaneous USB2 and DVI/HDMI connection

The HD-210U is the latest innovation from DAGE-MTI's solution oriented line of HD video cameras. This new "all-in-one" device offers the premier solution to viewing highly detailed images in a real-time live mode, with the ability to simply capture selected images directly to your computer.

The HD-210U is programmed for perfect color by adjusting yellow, cyan, green, magenta, red and blue (not just red, green and blue). Push one button (AWB) to view perfect color images and begin analysis.

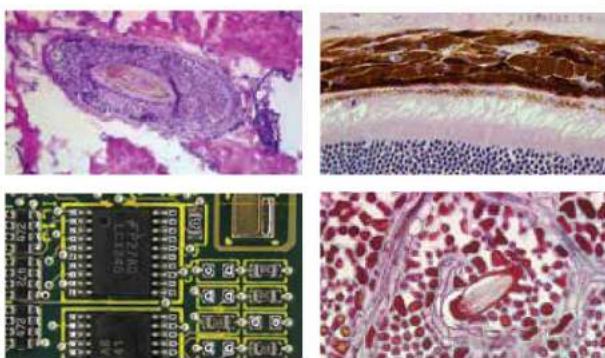
The HD-210U all-in-one solution will change the way you view HD video.



HD-210U



HD-210U Back Panel



Sample Images from the HD-210U

Full Screen HD Video with Optimum Accuracy

- The HD-210U offers a true 16:9 ratio image for full screen display.
- No compression, stretching, black bars or cropping of image.
- High frame rate means no smear or lag in viewing.
- USB connection with simultaneous HDMI/DVI outputs



Intuitive Click & Capture "Magic App" Software

- Dage-MTI's Magic App allows a user to easily capture images with a simple click of the mouse.
- Capture and review HD images with no lag time and no jitter.
- Images automatically labeled and saved with folder name(s), Image #, date and time.
- Scroll the mouse wheel to instantly review saved images.
- Easily save any HD image in jpg, tiff, png or bitmap formats.
- TWAIN interface with 3rd party software for live image and image transfer.

Applications

- Tumor Review Boards
- Pathology/Histology/Cytology
- Live Cell Imaging
- Teaching Environments
- Circuit Board Inspection
- Defect Analysis
- Dental Surgery
- Metrology

DAGE-MTI

www.dagemti.com

DAGE-MTI • 219.872.5514 • 701 N. Roeske Ave., • Michigan City, IN 46360

©2013 Dage-MTI, All Rights Reserved

REAL TIME, FULL SCREEN HD VIDEO

HD-210U All-in-One Real Time Click & Capture HD Video Camera

SPECIFICATIONS

Image sensor	1/3 inch color CMOS sensor, 2.1 megapixel
Output pixels	Horizontal: 1920, Vertical: 1080
Signal system	1080/59.94p, 1080/50p, 1080/59.94i, 1080/50i, 720/59.94p, 720/50p
Sensitivity	F 4 standard (2000 lx, 3000 K)
Minimum illumination	8 lx standard (50 IRE, F1.4 gain + 18 dB, gamma setting ON (setting value 0), 3000 K)
Output signal	DVI (Digital RGB) DVI-D terminal USB Video Class 1.1 mini-USB terminal (in conformity with USB 2.0)
Sync system	Internal
White balance	ATW (Automatic tracking white balance), AWB (Automatic white balance), MANUAL (Manual)
Gain	MANUAL (Manual), OFF (0 dB)
Scene file	Scene file A: Programmed for perfect color Scene file B: Programmed for perfect color with increased contrast Scene file C: Programmed for perfect color with extreme contrast Scene file D & E: User programmable
Lens mount	C mount
Power supply	12V DC \pm 10%
Power consumption	Approx 4.1 w
Weight	Approx 148g (0.326 lbs)
External dimension	44(W) x 44(H) x 78(D) mm (1.73"(W) x 1.73"(H) x 3.07"(D))
Operating temperature	0 °C to 40 °C (32° F to 104° F)
Operating humidity	Less than 90% (non condensing)

•Design and specifications are subject to change without notice

RECOMMENDED PC

OS: Windows® XP SP2 - SP3, Windows® Vista, Windows® 7
CPU: Intel® Pentium® compatible (x86 or x64) CPU, 1 GHz or more
Memory: 512 MB or more
USB Port: USB 2.0

- Exceptional detail 2.1 million pixel HD sensor
- Perfect color reproduction
- Live HD image adjusts quickly to magnification or scene change.
- No image smear, lag or jitter
- Eliminates eye fatigue from repetitive eyepiece viewing
- Enables collaborative diagnostics in group setting
- Allows entire class to view a live image on monitor or DLP projector
- 16:9 HD images fill the monitor screen
- Standard C-mount for connection to microscope or lens.
- Requires 0.33x, 0.4x or 0.5x coupler to microscope
- Dage-MTI service and support from industry leader

Ideal solution for a review board, teaching setting, collaborative environments, and industrial applications.



HD-210U



HD-210U Back Panel

DAGE-MTI

BioMedical Instruments Trading

Hofheimer Straße 63
D- 65719 Hofheim
Phone: +49 6192 2 91 88 66
Fax: +49 6192 90 13 98

Email: biomedical-instruments@science-products.com



in collaboration with:



Science Products Trading SPT AG
Käferholzstr. 142
CH- 4058 Basel
Phone +41 43 488 05 61
Fax: +41 43 488 05 62